



Booster for HDMI with EDID Detective



Download Here



[Manual](#) | [Data Sheet](#) | [Closer Look](#) | [In The Box](#) | [Diagram](#)



Extend HDMI over copper cables and keep sources and displays in sync

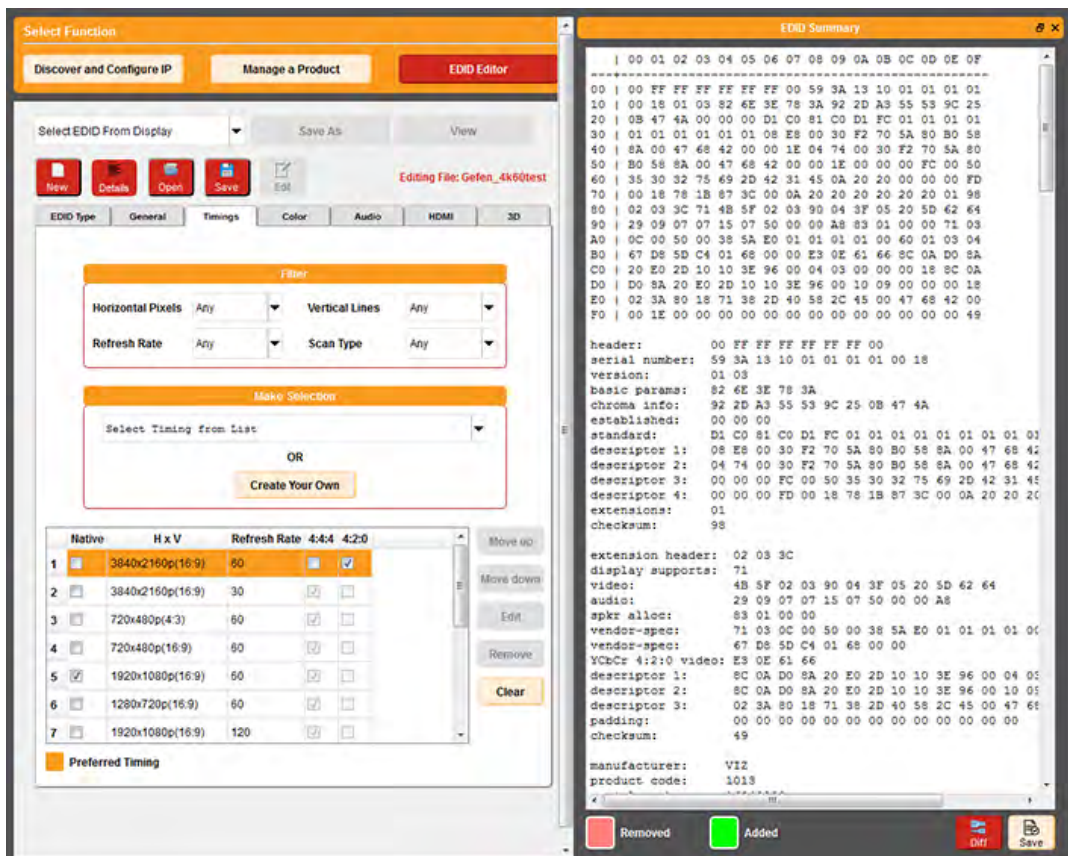
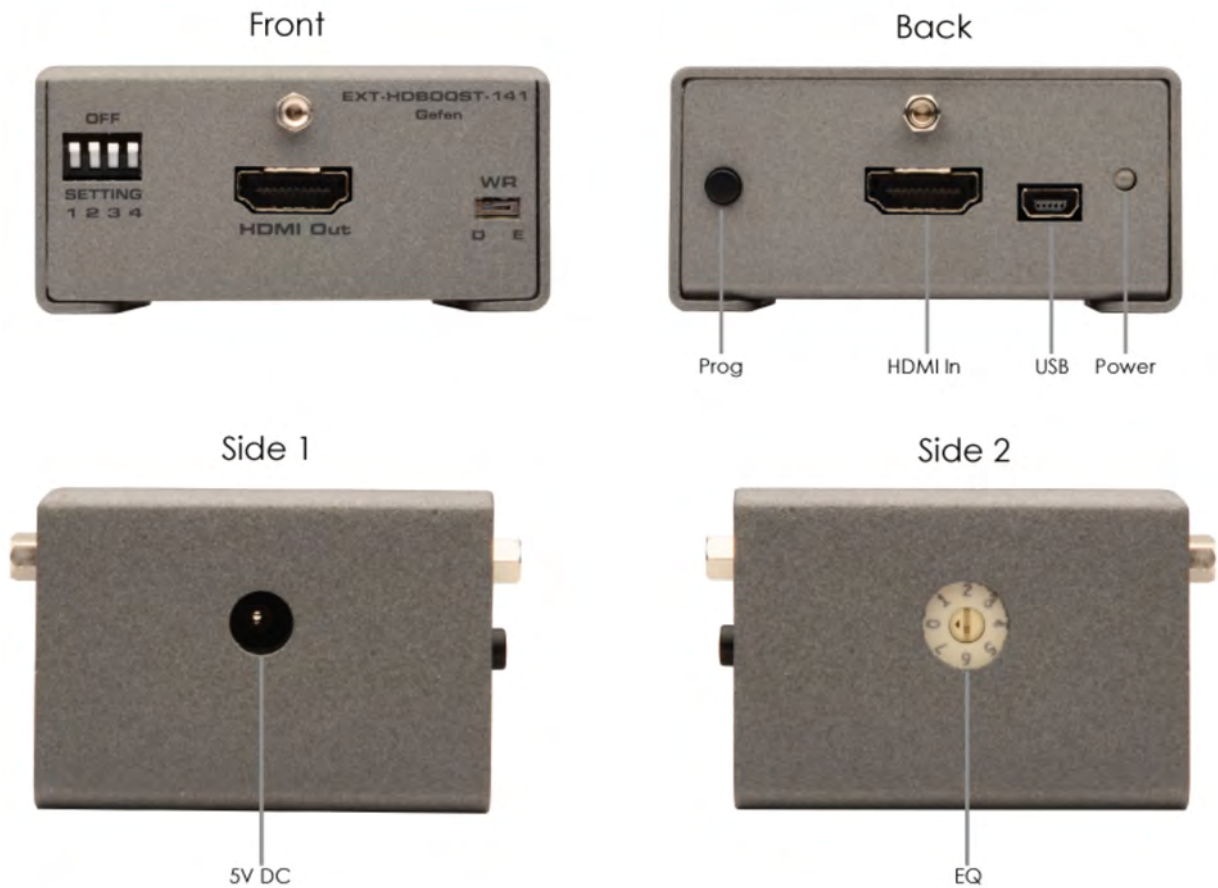
The Gefen Booster for HDMI with EDID Detective extends HDMI up to 150 feet (45 meters) at 1080p Full HD and up to 115 feet (35 meters) at 4K Ultra HD and 4K Cinema resolutions, using standard copper HDMI cables. HD and Ultra HD displays use EDID (Extended Display Identification Data) to ensure that a connected Hi-Def source sends compatible audio and video signals. In some scenarios, this data can be lost, resulting in an incorrect signal or complete loss of audio and/or video. With DDC re-clocking technology, the reliability of HDCP handshaking is improved, ensuring that the Hi-Def source always receives the correct EDID. Using the Gefen Syner-G™ software, the installer can also modify the EDID data to meet installation-specific requirements and resolve system-level compatibility issues. This Gefen Booster-Detective has been designed for quick and easy programming and installation.

User Application: Essential for applications where source and display are placed far apart, and are regularly switched or disconnected. Rapid re-syncing of source and display is easily and consistently achieved when using the EXT-HDBOOST-141.

How It Works

To program the EDID, connect the included HDMI cable from the booster to the HDMI input of the display. Connect the included power supply to the booster and plug the power cord into an available electrical outlet. Disable the Write Protect Switch, set the DIP switches to the appropriate positions, and press the Program button. Once the EDID programming is completed, the display and power supply can be disconnected without losing the recorded EDID. If a suitable EDID cannot be recorded, there are six pre-programmed EDID profiles and six user-programmable EDID banks that can be used. Instructions for selecting one of the pre-programmed EDID profiles and for copying/uploading additional EDIDs are outlined in the user's manual.

Connect an HDMI cable, up to the recommended maximum cable length, from the Hi-Def source to the HDMI input on the booster. Re-connect the included DC power supply and plug the power cord into an available electrical outlet. Power on the source and the display and a pristine Ultra High Definition picture will appear.



Features

- Extends copper HDMI cables up to 115 feet (35 meters) at 4K Ultra HD (3840 x 2160 @ 60 Hz 4:2:0 or 30 Hz 4:4:4), and 4K Cinema (DCI, @ 24 or 30 Hz 4:4:4)
- Extends copper HDMI cables up to 150 feet (45 meters) at 1080p Full HD
- Supported resolutions include 4K Ultra HD, 4K Cinema, 1080p Full HD, and 2048 x 1536 (QXGA)

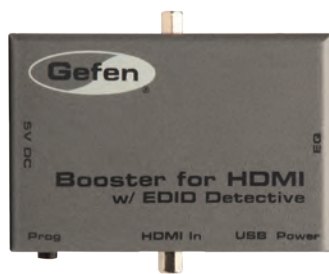
- HDMI Features Supported:
 - HDMI 2.0
 - HDCP
 - 12-bit Deep Color
 - LPCM 7.1 audio, Dolby® TrueHD, Dolby Digital® Plus, and DTS-HD® Master Audio™
 - 3DTV pass-through
 - Lip-Sync pass-through
 - CEC pass-through
- USB port for advanced programming of features such as video equalization, pre-emphasis, and EDID management
- Configurable EDID using Gefen Syner-G™ software suite, downloadable from Gefen website.
- DDC Re-clocking
- EQ adjustment for best results with varying cable types and lengths
- Can record the EDID from a display
- 6 pre-programmed EDID profiles
- 6 user-programmable EDID banks for copying/uploading EDIDs
- Selectable HDCP pass-through
- Field updatable firmware via USB port
- Compact and portable

Specifications

- Maximum Pixel Clock: 340 MHz
- Video Input Connector: (1) HDMI Type A 19-pin, female, locking
- Video Output Connector: (1) HDMI Type A 19-pin, female, locking
- USB port: (1) Mini-B
- EDID Memory Size: 256 Bytes
- EDID Write Protect Switch: (1) slide-type
- EDID Program Button: (1) tact-type
- EDID programming switches: (3) DIP-type
- HDCP pass-thru/block switch: (1) DIP-type
- EQ Level Switch: (1), 8-position rotary-type
- Power Supply : 5V DC
- Power Consumption: 5W (max.)
- Dimensions (W x H x D): 2.7" x 1.3" x 1.8" (68mm x 33mm x 46mm)
- Shipping Weight: 2 lbs (0.9kg)



Ultra HD Booster for HDMI with EDID Detective



EXT-HDBOOST-141

Extend HDMI over copper cables and keep sources and displays in sync

The Gefen Booster for HDMI with EDID Detective extends HDMI up to 150 feet (45 meters) at 1080p Full HD and up to 115 feet (35 meters) at 4K x 2K Ultra HD resolution, using standard copper HDMI cables. HDTV and Ultra HD displays use EDID (Extended Display Identification Data) to ensure that a connected Hi-Def source sends compatible audio and video signals. In some scenarios, this data can be lost, resulting in an incorrect signal or complete loss of audio and/or video. With DDC re-clocking technology, the reliability of HDCP handshaking is improved, ensuring that the Hi-Def source always receives the correct EDID. Using the Gefen EDID Tool+ PC software or terminal emulation via USB, the installer can also manipulate/modify the EDID data to meet installation-specific requirements and resolve system-specific compatibility issues. The booster-detective has been designed for quick and easy programming and installation.

How It Works

To program the EDID, connect the included HDMI cable from the booster to the HDMI input of the display. Connect the included power supply to the booster and plug the power cord into an available electrical outlet. Disable the Write Protect Switch, set the DIP switches to the appropriate positions, and press the Program button. Once the EDID programming is completed, the display and power supply can be disconnected without losing the recorded EDID. If a suitable EDID cannot be recorded, there are six pre-programmed EDID profiles and six user-programmable EDID banks that can be used. Instructions for selecting one of the pre-programmed EDID profiles and for copying/uploading additional EDIDs are outlined in the user's manual.

Connect an HDMI cable, up to the recommended maximum cable length, from the Hi-Def source to the HDMI input on the booster. Re-connect the included DC power supply and plug the power cord into an available electrical outlet. Power on the source and the display and a pristine Ultra High Definition picture will appear.

Features*

- Extends copper HDMI cables up to 150 feet (45 meters) at 1080p Full HD, and up to 115 feet (35 meters) at 4K x 2K Ultra HD
- Supports resolutions up to Ultra HD 4K x 2K (3840 x 2160 @ 30Hz), 1080p Full HD, and 2048 x 1536 (QXGA)
- HDMI Features Supported:
 - HDCP
 - 12-bit Deep Color
 - LPCM 7.1 audio, Dolby® TrueHD, Dolby Digital® Plus, and DTS-HD® Master Audio™
 - 3DTV pass-through
 - Lip-Sync pass-through
 - CEC pass-through
- USB port for advanced programming of features such as video equalization, pre-emphasis, and EDID management.
- Configurable and controllable using Gefen EDID Tool+ software, downloadable from Gefen website.
- DDC Re-clocking
- EQ adjustment for best results with varying cable types and lengths
- Can record the EDID from a display
- 6 pre-programmed EDID profiles
- 6 user-programmable EDID banks for copying/uploading EDIDs
- Selectable HDCP pass-through
- Field updatable firmware via USB port
- Compact and portable

Specifications*

- Maximum Pixel Clock: 340 MHz
- Video Input Connector: (1) HDMI Type A 19-pin, female, locking
- Video Output Connector: (1) HDMI Type A 19-pin, female, locking
- USB port: (1) Mini-B
- EDID Memory Size: 256 Bytes
- EDID Write Protect Switch: (1) slide-type
- EDID Program Button: (1) tact-type
- EDID programming switches: (3) DIP-type
- HDCP pass-thru/block switch: (1) DIP-type
- EQ Level Switch: (1), 8-position rotary-type
- Power Supply : 5V DC
- Power Consumption: 5W (max.)
- Dimensions (W x H x D): 2.7" x 1.3" x 1.8" (68mm x 33mm x 46mm)
- Shipping Weight: 2 lbs (0.9kg)



Gefen, LLC

20600 Nordhoff Street, Chatsworth CA 91311

Tel. (818) 772-9100 (800) 545-6900 Fax (818) 772-9120

www.gefen.com

* Features and specifications are subject to change without notice.

All trademarks are properties of their respective owners.

Copyright © 2013 Gefen LLC.